

PROPOSED HEAVY-DUTY BITUMINOUS PAVEMENT:
 6" GRANULAR BASE 21-B TYPE I, 95% COMPACTION
 4" BITUMINOUS BASE BM-25.0A
 2" BITUMINOUS SURFACE SM-12.5A
 SEE DETAIL SHEET C401



BEGIN PAVING OPERATIONS

PROPERTY BOUNDARY

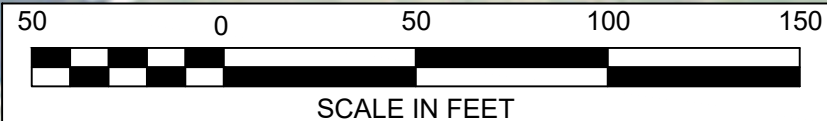
SINGLE TREE RD - RT. 643

PROPOSED ASPHALT
 CUMULATIVE AREA = 24,200 SQ FT

GATE CITY CONGREGATION OF
 JEHOVAH'S WITNESSES

24" CMP

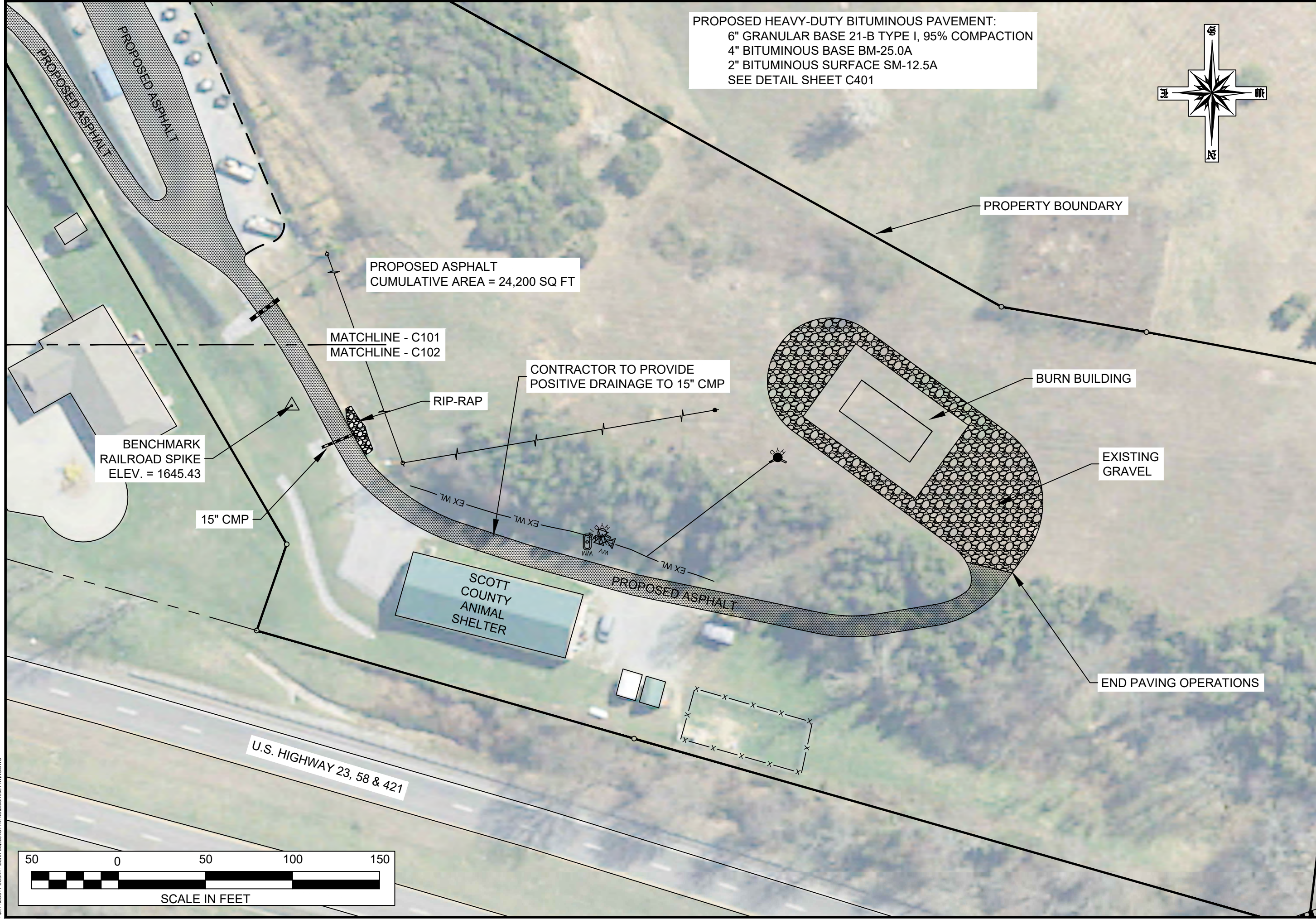
MATCHLINE - C101
 MATCHLINE - C102



DATE:	06/07/2022
NO.	REVISION DATE
1	
2	
3	
SHEET:	C101
DRAWN BY:	JBK
CHECKED BY:	JEB
PROJECT NO.:	TLG - 2009
THE LANE GROUP INC. © 2019	

File: P:\SCOTT COUNTY\BURN BUILDING\PAVING\22JUNE03 PAVING.DWG

PROPOSED HEAVY-DUTY BITUMINOUS PAVEMENT:
 6" GRANULAR BASE 21-B TYPE I, 95% COMPACTION
 4" BITUMINOUS BASE BM-25.0A
 2" BITUMINOUS SURFACE SM-12.5A
 SEE DETAIL SHEET C401



PROPERTY BOUNDARY

PROPOSED ASPHALT
 CUMULATIVE AREA = 24,200 SQ FT

MATCHLINE - C101
 MATCHLINE - C102

CONTRACTOR TO PROVIDE
 POSITIVE DRAINAGE TO 15" CMP

RIP-RAP

BURN BUILDING

EXISTING
 GRAVEL

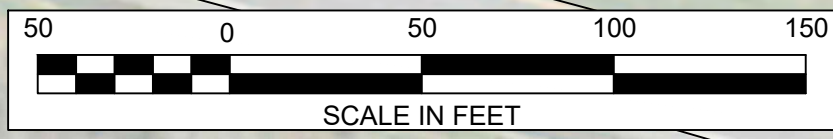
BENCHMARK
 RAILROAD SPIKE
 ELEV. = 1645.43

15" CMP

END PAVING OPERATIONS

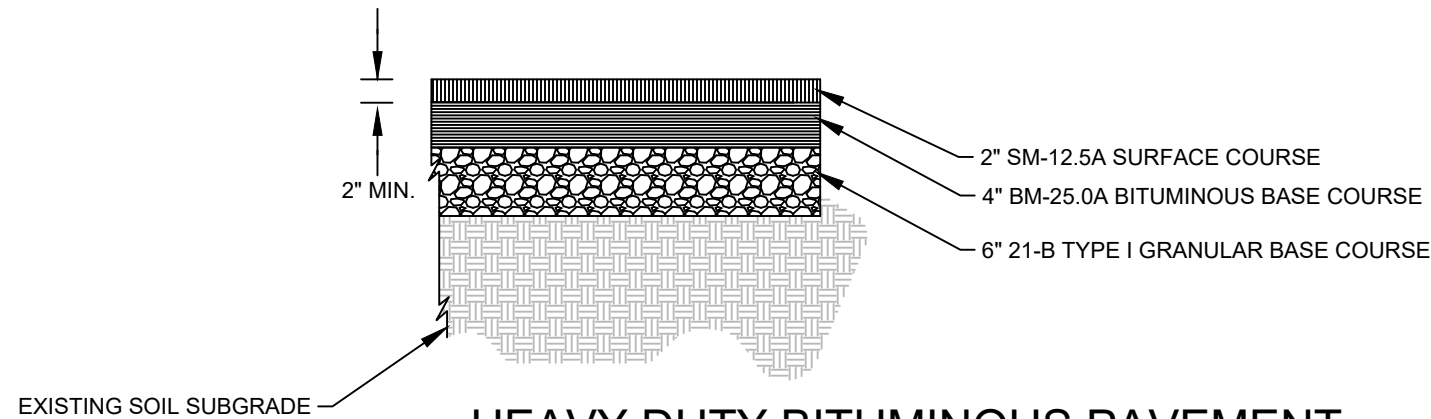
SCOTT
 COUNTY
 ANIMAL
 SHELTER

U.S. HIGHWAY 23, 58 & 421



DATE:	06/07/2022
NO.	REVISION DATE
1	
2	
3	
SHEET:	C102
DRAWN BY:	JBK
CHECKED BY:	JEB
PROJECT NO.:	TLG - 2009
THE LANE GROUP INC. © 2019	

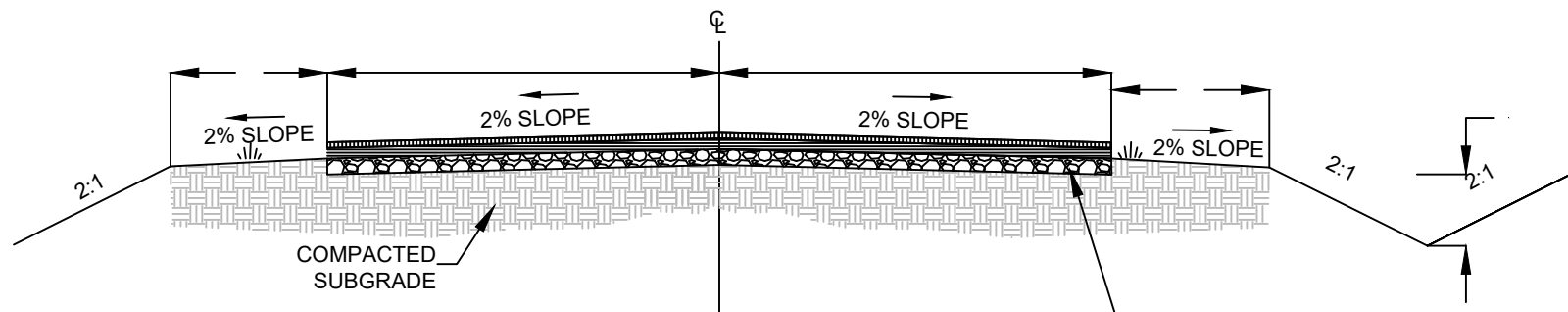
File: P:\SCOTT COUNTY\BURN BUILDING\PAVING\22JUNE03 PAVING.DWG



HEAVY DUTY BITUMINOUS PAVEMENT

NOTES

1. GRANULAR BASE COURSE SHALL BE COMPACTED TO 95% MAX. CAPACITY.
2. BITUMINOUS MATERIAL THICKNESS IS AFTER COMPLETION OF ROLLING AND COMPACTING.

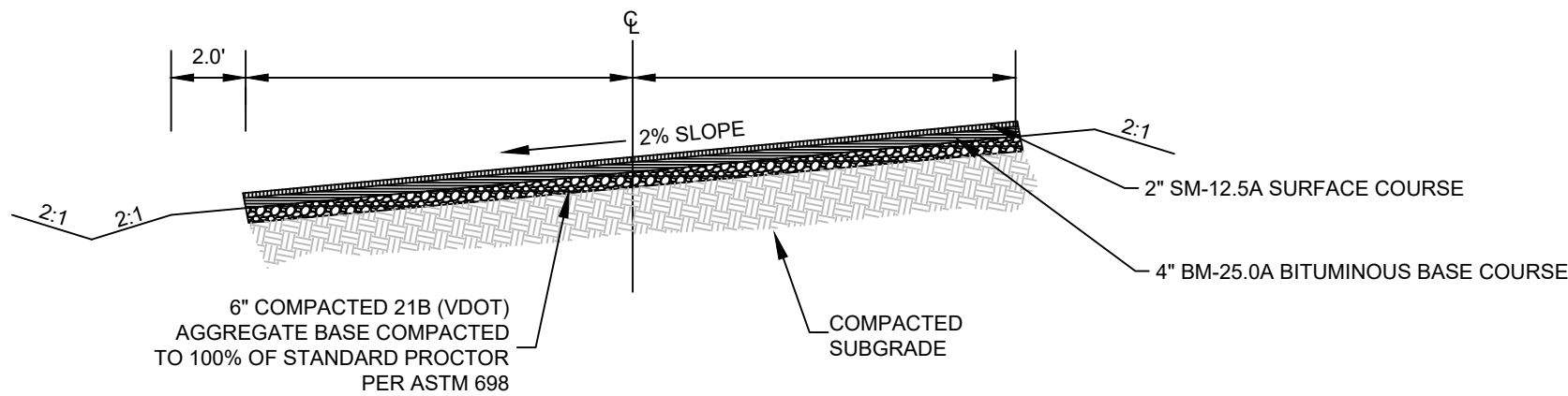


SUBGRADE SHALL BE PROOF-ROLLED PRIOR TO PLACING AGGREGATE BASE AND ALL FILL SHALL BE COMPACTED TO 95% OF STANDARD PROCTOR ASTM 698

6" COMPACTED 21B (VDOT) AGGREGATE BASE COMPACTED TO 100% OF STANDARD PROCTOR PER ASTM 698

TYPICAL SECTION ASPHALT ROAD

NOT TO SCALE



SUBGRADE SHALL BE PROOF-ROLLED PRIOR TO PLACING AGGREGATE BASE AND ALL FILL SHALL BE COMPACTED TO 95% OF STANDARD PROCTOR ASTM 698

TYPICAL SECTION ASPHALT ROAD - CROSS SLOPE

NOT TO SCALE

DATE:	06/07/2022
NO.	REVISION DATE
1	
2	
3	
SHEET:	C401
DRAWN BY:	JBK
CHECKED BY:	JEB
PROJECT NO.:	TLG - 2009
THE LANE GROUP INC. © 2019	

File: P:\SCOTT COUNTY\BURN BUILDING\PAVING\22JUNE\03 PAVING.DWG